

**HealthWorks! Kids' Museum St. Louis
General Public Parking Instructions
1100 Macklind Ave. St. Louis, MO 63110
314-241-7391**

All Options Outlined Below are Free!

***Parking Option #1: Berthold Parking Lot**

Parking Lot located at the entrance of HealthWorks!

From Macklind Ave., turn onto Berthold Ave. and make the first right into the first parking lot. You will see our bright blue awning in the corner of the lot.

*Please do not park in the spots closest to Paraquad's Health and Wellness Center. The 3 lines of parking, starting at our entrance, are for HealthWorks! visitors.

Parking Option #2: Macklind Avenue

Street Parking on the HealthWorks! side

Make a left out of our parking lot (towards Manchester, not Oakland). You will have to turn around in order to park on the HealthWorks! side of the street. There are meters there, however, we have permission from the city to park there for **free**.

In order to walk to our entrance, please walk up Macklind towards Oakland, make a right on Berthold, and a right into the first parking lot.

Parking Option #3: St. Louis Community College- Forest Park Parking Garage

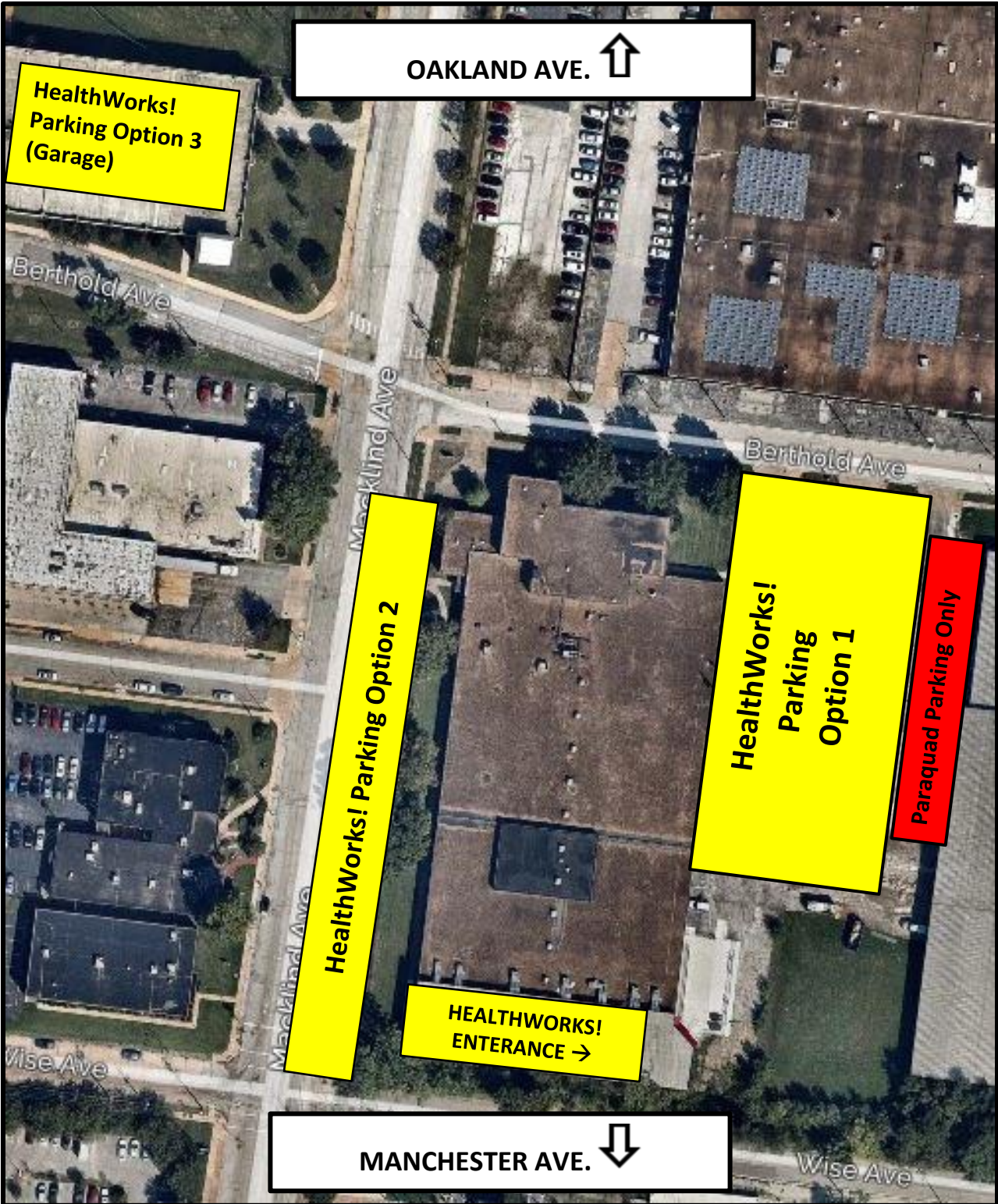
Parking Garage located across the street from HealthWorks!

From Berthold, cross Macklind and head straight. Signs will immediately take you into the entrance of the garage. This garage is free.

In order to walk to our entrance, please cross Macklind Ave. onto Berthold Ave. and make a right into the first parking lot.

Please see picture on the next page for further clarification.

Please do not park in any private lots other than what is identified as HW! parking in yellow.



OAKLAND AVE. ↑

HealthWorks!
Parking Option 3
(Garage)

HealthWorks! Parking Option 2

HealthWorks!
Parking
Option 1

Paraquad Parking Only

HEALTHWORKS!
ENTRANCE →

MANCHESTER AVE. ↓